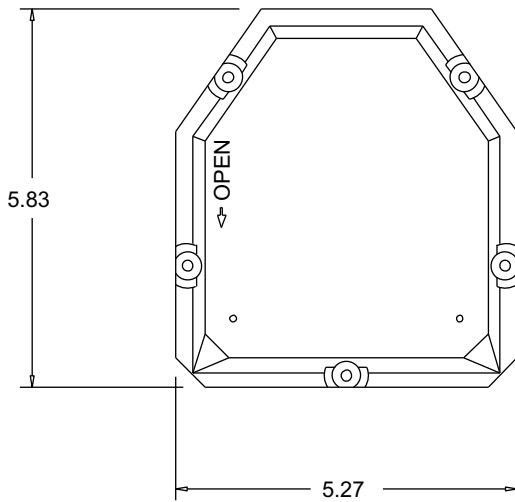


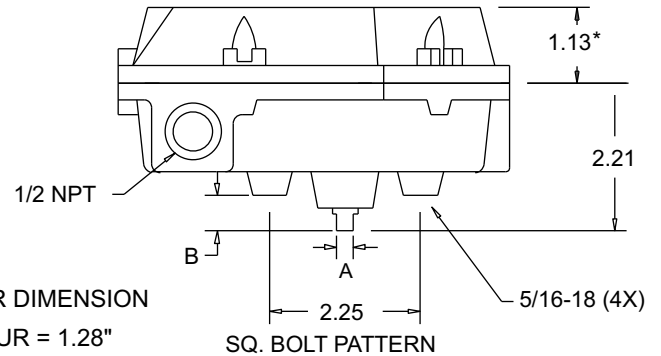
### Dimensions

### Top View



### Side View

	NAMUR	STD.
A	0.156	0.249
B	0.62**	0.53



\* - FLAT COVER DIMENSION

\*\* - LONG NAMUR = 1.28"

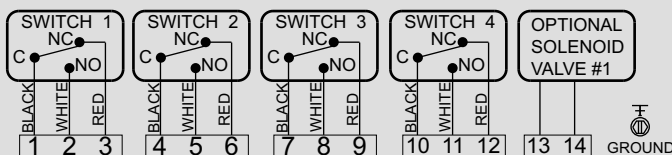
### General Specifications

Nema Rating	4, 4x
Housing / Cover	Aluminum
Indicator Cover	Ektar
Seals	BUNA-N
Fasteners	Stainless Steel
Terminal Points	14
Weight	4.25 lbs.
Operating Temp.	-40° F to 175° F

### How To Specify

Valve position transmitter shall be Moniteur model FFNB-1140/5140/E140. Enclosure shall be aluminum with a polyurethane coating and rated Nema 4, 4x. Enclosure shall have captive cover bolts. Enclosure shaft shall be attached to a sintered bronze housing bearing with an internal stainless steel locking ring, environmentally protected with an O-ring. The switch/sensor type shall be Cherry Mechanical rated 15A/250VAC - 2.5A/24 VDC. All switches and terminals must be enclosed and individually marked for identification. Terminal strip must be angle-mounted for easier installation.

### Wiring Diagram

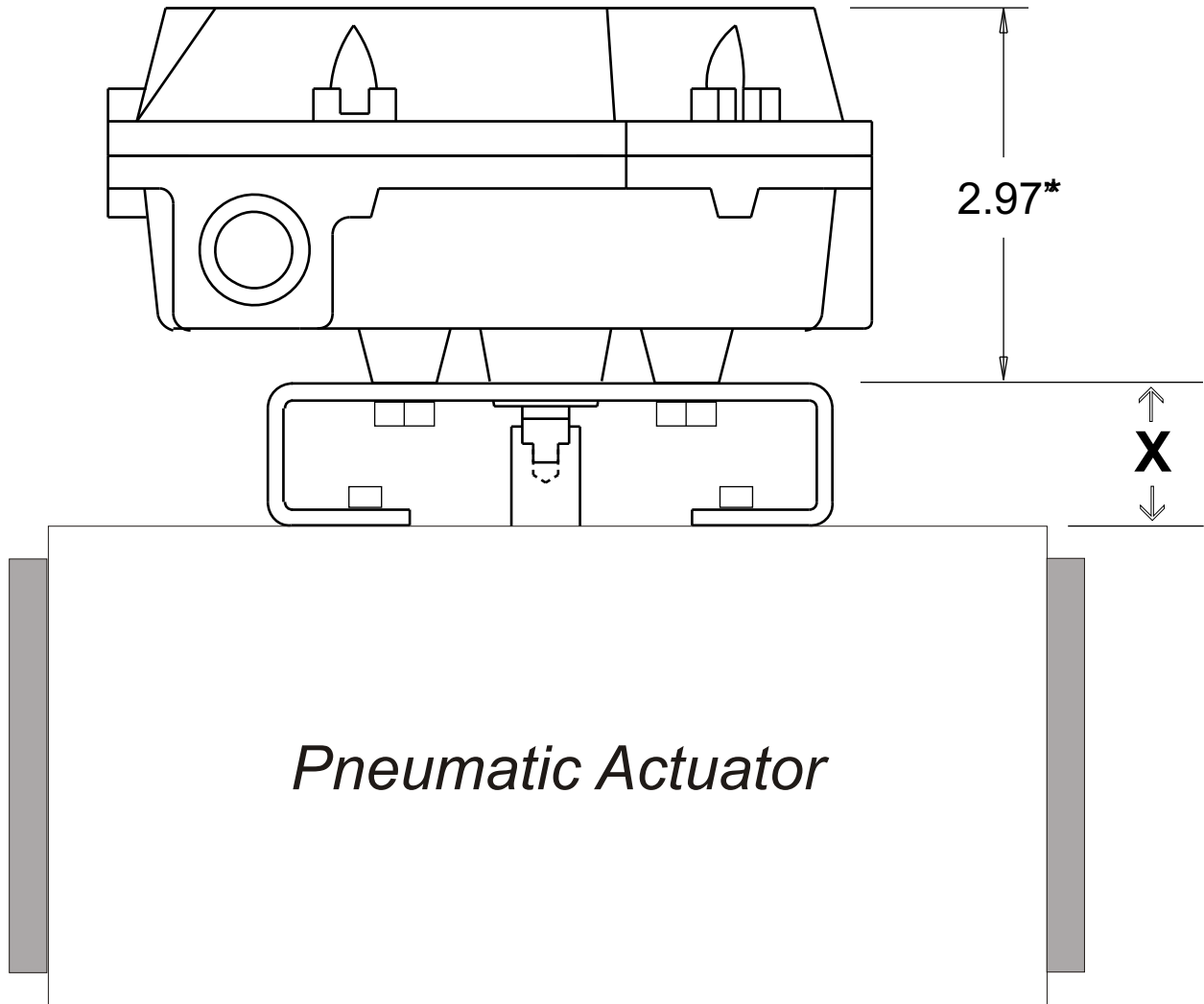


Agency Approvals  
CSA General Purpose

### Part Number Description



Description	Code	Description	Code	Description	Code
<b>Series: Watchman</b>	F	<b>Shaft</b>		<b>Switch Quantity</b>	4
<b>Cover</b>		Standard (1/4" Flats)	1	<b>Conduit</b>	
Flat (No Indicator)	F	Low Profile NAMUR 303 SS	5	(2) 1/2" F NPT	0
<b>Moniteur</b>		Standard NAMUR 303 SS	E		
None	N	<b>Switch Type</b>			
<b>Bearing</b>		Cherry Mechanical SPDT			
Sintered Bronze	B	rated 15A/250VAC -			
		2.5A/24VDC	1		



<u>Mounting Size</u>	<u>"X"</u>
80 x 30 x 20 mm	1.14"
80 x 30 x 30 mm	1.53
130 x 30 x 30 mm	1.53
130 x 30 x 50 mm	2.32"